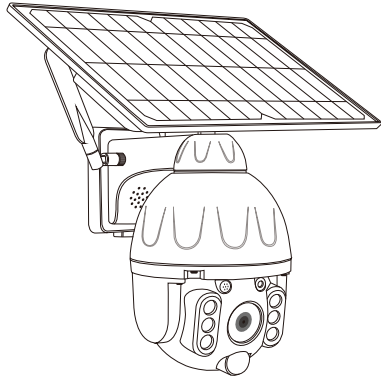


# Wi-Fi Solar Battery Powered PTZ Alert Camera

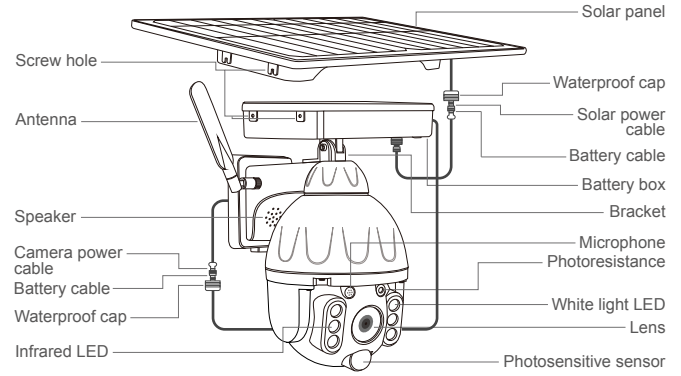
## User Manual



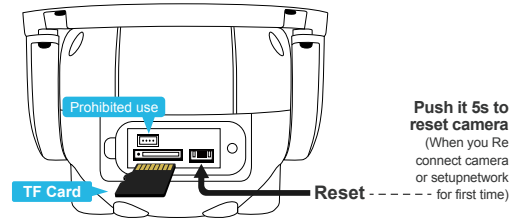
V1.7

### 1. PRODUCTS & PACKING LIST

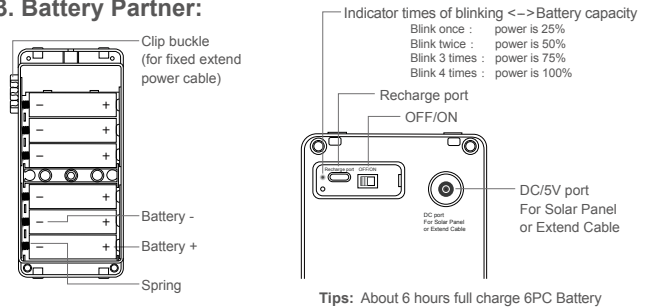
#### 1.1 Product Diagram:



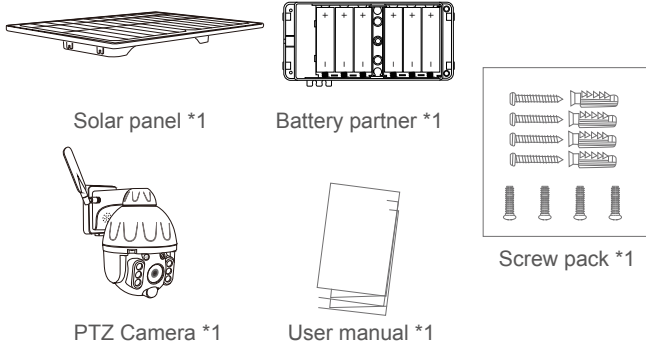
#### 1.2. Wi-Fi Camera Card Slot:



#### 1.3. Battery Partner:

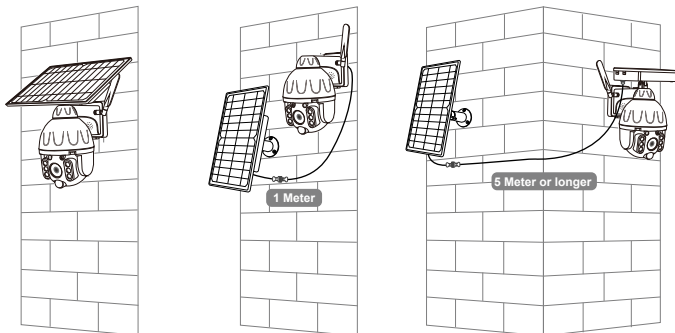


#### 1.4. Packing list:

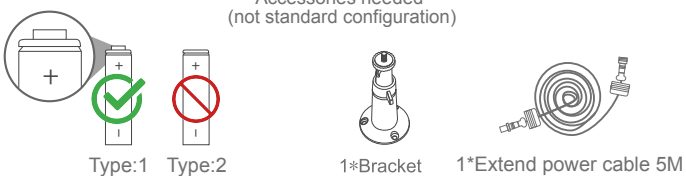


### 2. INSTALLATION METHOD

#### 2.1 Integrated installation 2.2 Split Installation 2.3 Extend Installation



Accessories needed (not standard configuration)



### ATTENTION :

**Fully charge the battery when using the camera for the first time.**

### 3 APP REGISTRATION

3.1. Scan the following QR codes or search for "UBox" from the App Store (for iOS devices) or Google Play Store (for Android smartphones) to download and install the app.

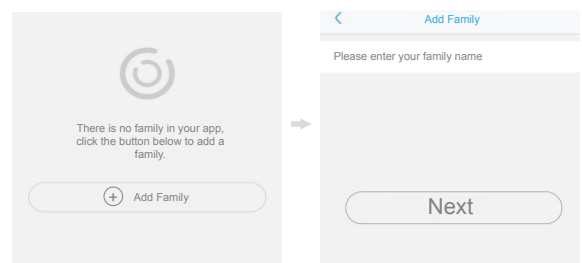


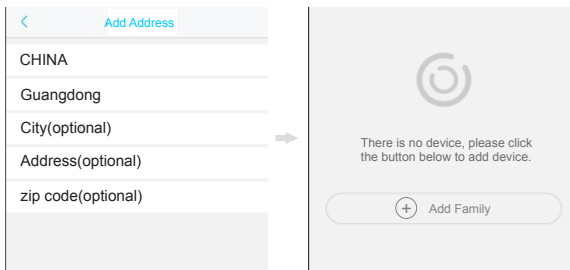
iOS / Android

3.2. Open the app then input your E-mail address then press 'Register'. Check and select to agree the agreement then your E-mail box will get an verification code. (For better user's experience, please allow to open all permissions to avoid missing any notifications from the app.)

### 4. WiFi CONNECTION

- 4.1. Press 'Add Family' then set the room or position as per reminders.
- 4.2. Enter your family name and then press 'Next'.
- 4.3. Input the necessary information just like Country, Province, then press 'Done'.
- 4.4. Press 'Add a device' to add a smart device

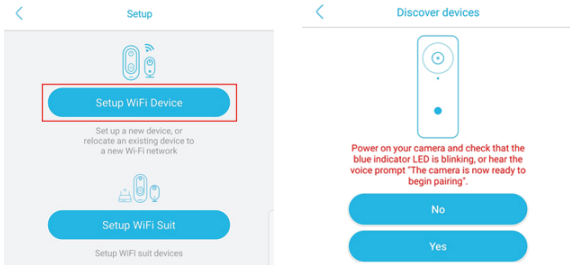




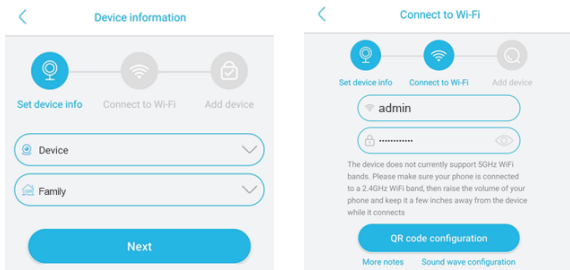
\* Total letters both username and password of 2.4G wifi router should less 32 letters.

4.5. Click "Setup WiFi Device" to enter the next step.

4.6. If the device blue LED not light up, please check below config notes.

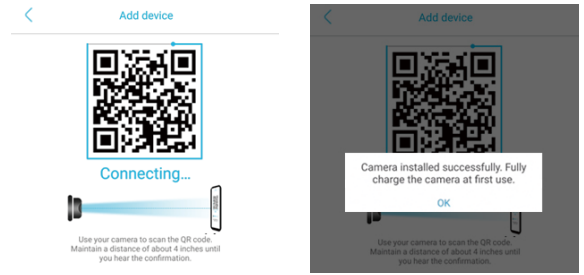


4.7. Enter the WiFi account password to connect. The device does not support 5GHz WiFi temporarily, please switch to 2.4GHz WiFi.



4.8. Align the QR code on the phone with the camera lens to scan the code, and keep the distance between the phone and the camera 10cm.

4.9. The connection is successful, press "OK" to complete the connection.



## 5. DEVICE SETTING

Notes about PIR detection

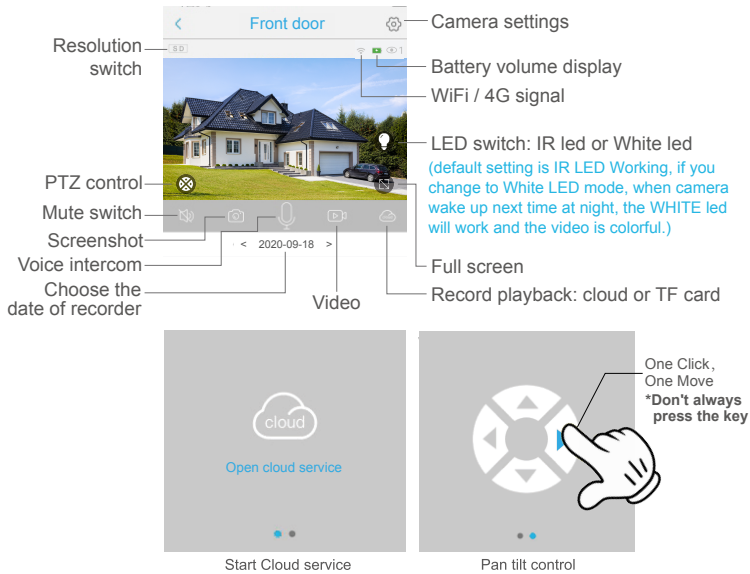
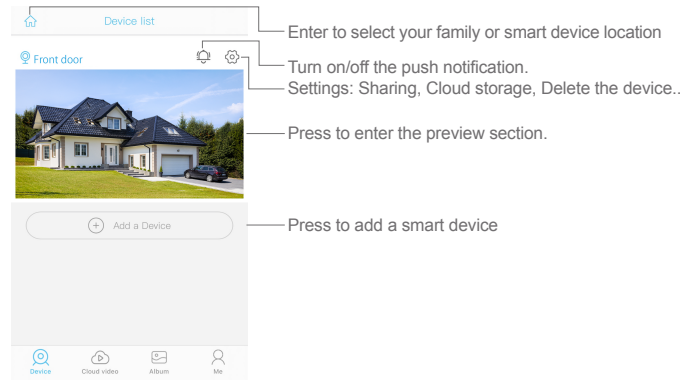
\* User can change the PIR detection sensitivity in device settings. we recommend to set sensitivity at "Disabled" or "Low" to reduce flase alret and save the battery power in noisy environments.

\* Disabled: disabled PIR detection.

\* Low: deley 7 seconds PIR detects a moving.

\* Medium: deley 5 seconds PIR detects a moving.

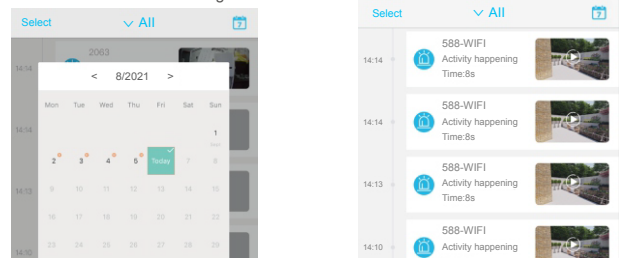
\* High: deley 1 second PIR detects a moving.



Device settings	
Device name	Front door > Modify device name
Memory card	Cloud video > Check the storage capacity, Format SD card
Image flip	Normal > Image mode modification, normal, mirror, flip
Scene mode	Normal > Can be modified according to the use scene to obtain a better image
Detection sensitivity	High > Modify the sensitivity of PIR detection
Sleep delay	15s > Modify the sleep time of the device
Power frequency	50Hz > Modify power frequency
LED indicator	On > Indicator light on/off
Synchronization time	> Modify the device time to synchronize with the phone time

Click the "Calendar" icon on the right top corner, then choose the date to playback the video from cloud storage.

Choose the desired date to check all videos from the cloud.



## 6. CONFIG NOTES

### Question:

Work fine for several months, Camera won't rotate in any direction or wake up by the PIR. but you can connect and view it via mobile phone remotly

**Reason:** lower power for batteries issue.

### Action:

Use Tpye-C Cable recharge the camera with DC 5V power supply about 2s, it can enable the protect function of battery again. camera will rotate again. now you should charge the batteries fully before install it on the wall.

6.1 Please charge the battery fully before using the device. The battery life will be affected by the device wake-up time and the number of wake-ups. Therefore, the PIR sensor alarm detection function is used in an environment with a lot of people. It is recommended to turn off or set the device to low sensitivity to reduce device wake-up and call times extend battery life. **When the battery is low, please charge the battery immediately.**

6.2 It is a delicated device with low power consumption design. Everytime the device is awakened and will work for few seconds. After that, the device will enter standby mode to save power. You can set the work time in the app settings.

6.3 Keep the device in range of your router. Make sure the device is placed close to the Wi-Fi router. If there has to be thick or insulated objects between the device and the Wi-Fi router, which may lead to weak Wi-Fi signal, please make sure the Wi-Fi signal is in good level before you start using the device.

6.4 This device provides one month of free cloud storage services. If you need to continue using value-added services after the trial period expires, you need to purchase them in the app.